

Druktester voor turbo systeem

Productcode: RO1531
Beschikbaarheid: 1



Prijs: 139,00 €

Omschrijving

Druktester voor turbocompressorsystemen

- om de componenten van het laadsysteem na installatie te controleren
- Een veiligheidsklep op de perslucht slang voorkomt overmatige druk op het turbosysteem
- Geschikt voor uitlaatgasturbo's, G-superchargers en compressorsystemen
- Ook geschikt voor het gebruik in combinatie met lekdetectiemiddelen

Materiaal: nylon

Vulklep met kraan, manometer en overdrukbeveiliging

2 x adapters met een diameter van 35 - 40 - 45 mm

2 x adapters met een diameter van 50 - 55 - 60 mm

2 x adapters met een diameter van 65 - 70 - 75 mm

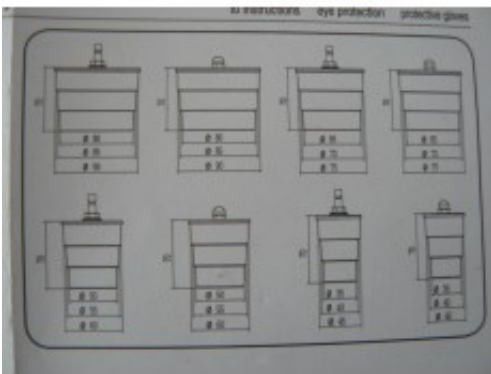
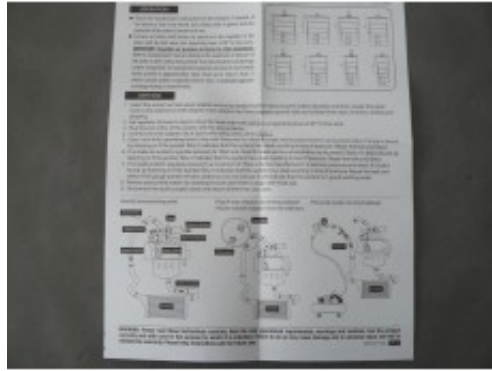
2 x adapters met een diameter van 80 - 85 - 90 mm

1x verbinding met snelkoppeling

Alles is netjes gesorteerd in een plastic koffer

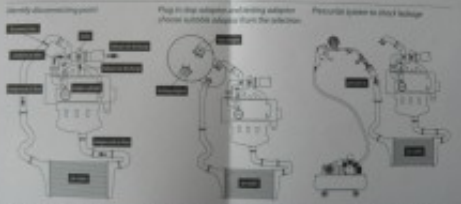
De tester gebruik je als volgt :

Product galerij





2. Operate the fully opening valve to the left (marked with a red arrow) until the pressure gauge reads 0.2 bar (3.0 psi). If the pressure gauge is not at 0.2 bar, it indicates that the system has a leak resulting in loss of pressure. Repair the leak and recheck the pressure gauge.
3. If the pressure gauge reads 0.2 bar, it indicates that the system has a leak resulting in loss of pressure. Repair the leak and recheck the pressure gauge.
4. If the pressure gauge reads 0.2 bar, it indicates that the system has a leak resulting in loss of pressure. Repair the leak and recheck the pressure gauge.
5. If the pressure gauge reads 0.2 bar, it indicates that the system has a leak resulting in loss of pressure. Repair the leak and recheck the pressure gauge.
6. If the pressure gauge reads 0.2 bar, it indicates that the system has a leak resulting in loss of pressure. Repair the leak and recheck the pressure gauge.
7. If the pressure gauge reads 0.2 bar, it indicates that the system has a leak resulting in loss of pressure. Repair the leak and recheck the pressure gauge.
8. If the pressure gauge reads 0.2 bar, it indicates that the system has a leak resulting in loss of pressure. Repair the leak and recheck the pressure gauge.
9. If the pressure gauge reads 0.2 bar, it indicates that the system has a leak resulting in loss of pressure. Repair the leak and recheck the pressure gauge.
10. If the pressure gauge reads 0.2 bar, it indicates that the system has a leak resulting in loss of pressure. Repair the leak and recheck the pressure gauge.



WARNING: Please read these instructions carefully. Note the safe operational requirements, warnings and cautions for the product carefully and with care for the purpose for which it is intended. Failure to do so may cause damage and/or personal injury and will void the warranty. Please keep instructions safe for future use.